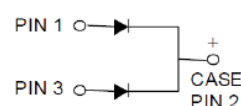


SCHOTTKY RECTIFIERS

Features

- Low power loss , high efficiency
- High surge capacity
- For use in low voltage , high frequency inverters
Free wheeling , and polarity protection applications
- Metal silicon junction , majority carrier conduction
- Guard ring for over voltage protection



Absolute Maximum Rating ($T_c = 25^\circ\text{C}$)

Characteristics	Symbol	Rating	Unit
Maximum Repetitive Reverse Voltage	V_{RRM}	100	V
Average Rectified Forward Current	$I_{F(AV)}$	10	A
Non-repetitive Peak Forward Surge Current 8.3ms Single Half-sine-Wave	I_{FSM}	110	A
Collector Power Dissipation ($T_a = 25^\circ\text{C}$)	P_{tot}	1.5	W
Junction Temperature	T_j	175	$^\circ\text{C}$
Storage Temperature Range	T_{STG}	-55~175	$^\circ\text{C}$

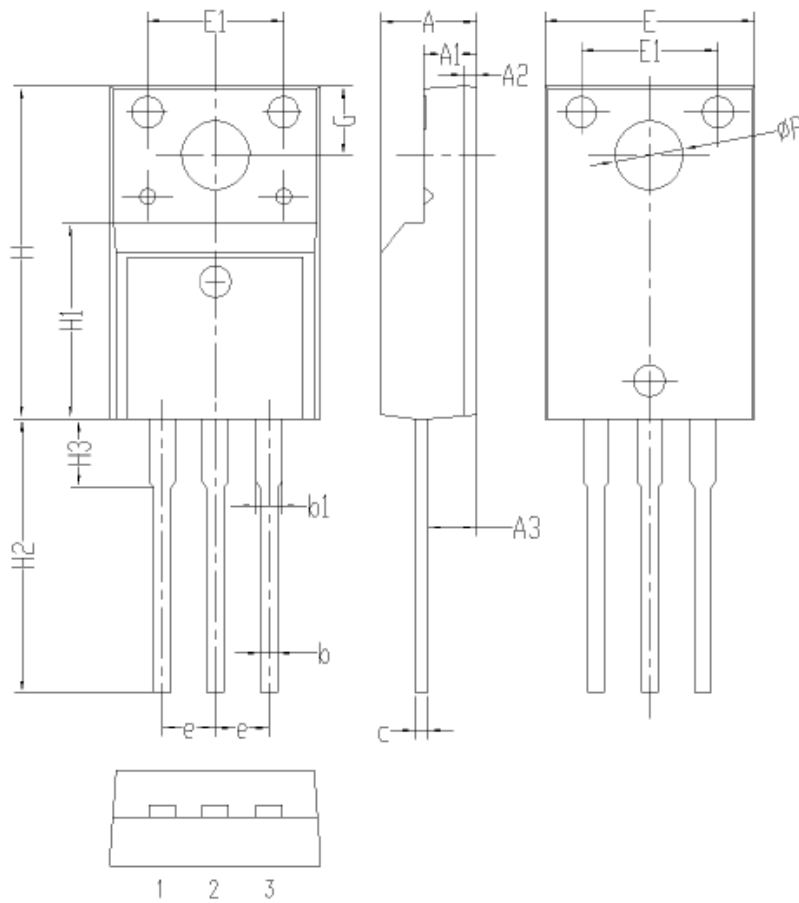
Electrical Characteristics ($T_c = 25^\circ\text{C}$)

Characteristics	Symbol	Test Condition	Min	Typ	Max	Unit
Forward Voltage	V_F	$I_F = 10\text{ A}$, $T_c = 25^\circ\text{C}$			0.77	V
Reverse Current	I_R	$V_R = 100\text{ V}$, $T_c = 25^\circ\text{C}$ $V_R = 100\text{ V}$, $T_c = 125^\circ\text{C}$			0.015 10	mA
Peak Repetitive Reverses Surge Current	I_{RRM}	2.0 us Pulse Width , $f = 1.0\text{ kHz}$, $T_j < 175^\circ\text{C}$			2.5	A

Parameter	Symbol	Typ	Units
Junction to Ambient	$R_{\theta JA}$	70	$^\circ\text{C}/\text{W}$

Package Information

TO-220FH PACKAGE



	单位 mm		
	MIN	NOM	MAX
A	4.35	4.55	4.75
A 1	2.3	2.5	2.7
A 2	0.4	0.6	0.8
A 3	2.1	2.3	2.5
b	0.6	0.8	1.0
b 1	1.0	1.2	1.4
c	0.3	0.5	0.7
e	2.3	2.5	2.7
E	9.8	10	10.2
E 1	6.3	6.5	6.7
H	15.6	15.8	16.0
H 1	8.8	9	9.2
H 2	12.9	13.2	13.5
H 3	3.1	3.3	3.5
G	3.1	3.3	3.5
ΦP	3.1	3.3	3.5